

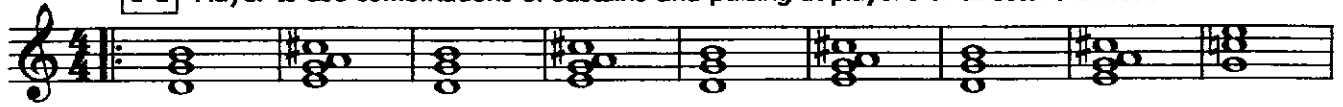
Part 3
Part in F

for COMA
In C Interlude

♩ = 194

Michael Nyman

A Player to use combinations of sustains and pulsing at player's or director's direction*



mf

10



18



27



36



45



53



62



71



77



Last Time Only

*sustained mid-range chords, early on as semibreves, then possibly minims, then possibly crotchets, then possibly quavers on strings, keyboard, guitar, etc.